



SYSTAINER SYSTEMS



Create Your Ideal Custom Case

Endless combinations, unlimited possibilities, seamless branding, and identity - all guaranteed through perfect customization.

systainer[®] is your quintessential, one-stop solution for all storage, packaging, organization, transportation, and presentation needs regardless of your industry, products and or services. When it comes to choosing the right customization for your systainer[®], we have you covered. systainer[®] has the largest portfolio on the market with 52 different variations which allows for countless customizations. We understand how important your industry is and finding the right equipment is essential. While your performance and productivity within your industry is exceptional, systainer[®] is here to provide you with unmatched customization, bolstering your equipment, products and services into optimal performance. systainer[®] not only matches, but surpasses your industry's particular needs through customized structure, colors, and various dimensions.



SYSTAINER SYSTEMS

Creating Your Customized Systainer³

Creating the customized Systainer³ can be broken down into three core components that allow for perfect customization tailored to your specific needs. These include choosing the Proper Case, Inlays and Branding.



1. Choosing the Proper Case



2. Choosing the Proper Inlays



3. Branding



SYSTAINER SYSTEMS

We understand that your industry continues to grow and develop each year. With expansion and development comes the need for greater mobility, storage, and efficiency, which is why we created the innovative third-generation Systainer³ as the definitive answer to all your questions. The revolutionary Systainer³ contains the best features of the systainer[®] Classic Line made in 1993, and the systainer[®] T-Loc was produced in 2010 but features the most collective advantages than ever before.

The systainer[®] connects solutions



Mobile



Multifunctional



Reliable



Versatile



Linkable



Quick & Easy



SYSTAINER SYSTEMS

1. Choosing the Proper Case

This newly patented Systainer³ comes with excellent improvements, including greater mobility, stability, application, and packing possibilities. There are extended features to the Systainer³ that increase functionality. Available sizes and heights expand usage possibilities. Packing possibilities are endless with the new components of this brilliant third-generation Systainer³.

Due to the new innovative features of Systainer³ you can rest assured that the pressure of meeting your mobile work requirements is now obsolete as our futuristic model is exceedingly unique and exceptionally efficient.

Distinctive features that ensure this capability are:



Systainer³ Rails

The unparalleled integrated front handle that allows upwards carrying of the case

Label slots for extra customization

Third lid hinge and raised reinforced bottom cross for more stability

Theft Tags that allow for ultimate security.

Find the perfect Systainer³ among different options that not only meets but exceeds your business performance and industrial needs. These include the Systainer³ M, Systainer³ L, Systainer³ XXL, Systainer³ Organizer, and Systainer³ ToolBox.





SYSTAINER SYSTEMS

Types of Systainer³ Cases:

The Systainer³ M

The Systainer³ M's dimensions are 15.59" x 11.65" with 6 different heights. These range from 4.13" to 16.93". This is the most popular size for sales packaging or demo cases. The smaller of these are used particularly to store small parts, tools, machines, and other objects, while the large ones are needed for bigger machines and equipment. These are often used in the company warehouse or as a maintenance case when working on location.



	Outside H* x W x D	Inside H x W x D	Weight	Inner volume	Pallet Pcs. / H.
Systainer³ M 112 1)	4.13" x 15.59" x 11.65"	2.80" x 15.33" x 10.83"	3.086 lbs	2.034 gal	128 / 72.32"
Systainer³ M 137 2)	5.12" x 15.59" x 11.65"	3.78" x 15.33" x 10.83"	3.307 lbs	2.747 gal	104 / 72.72"
Systainer³ M 187 3)	7.09" x 15.59" x 11.65"	5.75" x 15.34" x 10.83"	3.726 lbs	4,200 gal	72 / 69.96"
Systainer³ M 237 4)	9.06" x 15.59" x 11.65"	7.72" x 15.34" x 10.83"	4.167 lbs	5.653 gal	56 / 69.57"
Systainer³ M 337 5)	12.99" x 15.59" x 11.65"	11.65" x 15.34" x 10.83"	5.181 lbs	8.559 gal	40 / 71.14"
Systainer³ M 437 6)	16.93" x 15.59" x 11.65"	15.51" x 15.34" x 10.83"	6.371 lbs	11.386 gal	32 / 73.90"

The Systainer³ L

The basic dimensions are 20.00" x 11.65" with 3 different heights ranging from 5.12" to 9.06".



	Outside H* x W x D	Inside H x W x D	Weight	Inner volume	Pallet Pcs. / H.
Systainer³ L 137 7)	5.12" x 20.00" x 11.65"	3.70" x 19.74" x 10.83"	4.233 lbs	3.487 gal	52 / 72.72"
Systainer³ L 187 8)	7.09" x 20.00" x 11.65"	5.67" x 19.75" x 10.83"	4.718 lbs	5.336 gal	36 / 69.96"
Systainer³ L 237 9)	9.06" x 20.00" x 11.65"	7.64" x 19.75" x 10.83"	5.247 lbs	7.238 gal	28 / 69.57"

The Systainer³ XXL

By far the largest of the three types optimizing increased storage. It is 31.18" x 11.65" and offers two heights, namely: 9.06" and 12.99".



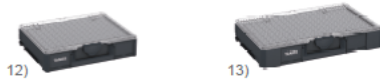
	Outside H* x W x D	Inside H x W x D	Weight	Inner volume	Pallet Pcs. / H.
Systainer³ XXL 237 10)	9.06" x 31.18" x 11.65"	7.40" x 30.96" x 10.99"	8.025 lbs	11.174 gal	28 / 69.57"
Systainer³ XXL 337 11)	12.99" x 31.18" x 11.65"	11.34" x 30.95" x 10.99"	9.546 lbs	16.960 gal	20 / 71.14"



SYSTAINER SYSTEMS

The Systainer³ Organizer

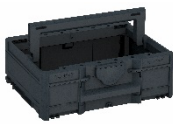
The Systainer³ organizer makes sure every small consumable material has its place and is clearly sorted. With a single available height of 3.23", it has a transparent lid and flexible insert boxes of various sizes.



	Outside H* x W x D	Inside H x W x D	Weight	Inner volume	Pallet Pcs. / H.
Systainer³ Organizer M 89 12)	3.23" x 15.59" x 11.65"	2.36" x 15.33" x 9.69"	3.527 lbs	1.955 gal	160 / 72.32"
Systainer³ Organizer L 89 13)	3.23" x 20.00" x 11.65"	2.36" x 19.74" x 10.96"	4.387 lbs	2.562 gal	80 / 72.32"

The Systainer³ Toolbox

The Systainer³ Toolbox is a convertible version of the Systainer³ system with plenty of storage capacity for tools, working materials, and accessories. It comes in M and L widths with two heights available: 5.12" and 9.06", and incorporates the convenience of a foldable/retractable handle.



Systainer³ M
5.12"



Systainer³ M
9.06"



Systainer³ L
5.12"



Systainer³ L
9.06"

Once you determine what size best serves your product, services, and industry, you can furthermore enhance your Systainer³ individualization by choosing additional, selectively crafted components.



SYSTAINER SYSTEMS

After choosing the right type of Systainer³ and size to adequately meet the requirements of your products, services, and industry, it is important to select the ideal structure that secures and organizes your products within. When it comes to customizing the structure of your systainer[®], there are a variety of inserts to choose from that will match your specific needs. These include, but are not limited to: Foam, EPP, and Deep Drawn Inserts. In addition to a wide variety of standard solutions, we can make your very own specialized bottom and lid inserts in order to match your unique product. Such customized solutions may even include making the foam inserts in your own corporate colors.

Standard product range



Special design



Foam Inserts

Numerous features make Foam inserts a great option for your systainer[®]. The advantages of Foam inserts are cost-effective, include a vast array of individualized colors and materials, quick production time, and optimum protective properties. These inlays are perfect for thoroughly protecting sensitive and light objects.



Customer Examples



SYSTAINER SYSTEMS

Lid Foam - Vaulted

A rectangular contoured foam that is universal for Systainer³, and optimally protects sensitive or small objects, ensuring they are sealed tight and do not fall out.



Vaulted Foam Lid Insert
for Systainer³ M



Vaulted Foam Lid Insert
for Systainer³ L



Vaulted Foam Lid Insert
for Systainer³ XXL

Base Foam soft

Contoured and universal for Systainer³ making it ideal for protecting light objects.



Base foam soft
for Systainer³ M



Base foam soft
for Systainer³ L



Base foam soft
for Systainer³ XXL

Pick and Pluck Foam rigid

Contoured and universal for Systainer³ and can be adjusted to configure perfectly around the shape of objects that are packed for customized safeguard.



Pick and Pluck Foam Rigid
for Systainer³ M



Pick and Pluck Foam Rigid
for Systainer³ L



Pick and Pluck Foam Rigid
for Systainer³ XXL



SYSTAINER SYSTEMS

2. Choosing the Proper Inlay

Basic Foam with Cross Cut-out

Contains different base crosses that allow for a flat surface.



Base foam with cross cut-out

Full Padding

This insert allows for all around protection, including that of the inside walls, and offers different heights and shapes.



Compatible with: Systainer³ M 187



SYSTAINER SYSTEMS

Types of Deep Drawn Inserts

Deep Drawn Inserts

Deep Drawn inserts are attractively priced and provide excellent organization and storage transportation capacity. These inserts are superiorly designed specifically for power tools as they are resistant to sharp objects and house many tools in an organized and protective manner.



ABUS

Universal Inserts

The advantage is that it facilitates small parts storage with excellent precision and is more resistant to sharp objects in comparison to foam. Comes in two variants: with 10 compartments (compatible with Systainer³ M 112) and with 6 compartments (compatible with Systainer³ L 137).



Compatible with: Systainer³ M 112



Compatible with: Systainer³ L 137



SYSTAINER SYSTEMS

EPP Inserts

Many advantages come with choosing the EPP insert. This insert has excellent insulating properties, offers great protection, covers nearly all sizes, and allows for vast storage, which increases transportation volume. They are weather, shock, and chemical resistant, which makes EPP inserts ideal for transporting materials allowing for it to be an ideal option for the medical industry.



Shaper Origin

EPP Lid Insert

Seals off the bottom inserts to keep sensitive objects sorted and protected effectively.



EPP Foam Lid Insert
for Systainer³ M



EPP Foam Lid Insert
for Systainer³ L

EPP Base Insert

Similar to Base foam as it is cross cut-out which enables enclosed products to lay on a flat surface.



EPP Foam Base Insert
Compatible with Systainer³ L



SYSTAINER SYSTEMS

Types of EPP Inserts

EPP cartridge Inserts

An excellent capacity of allowing for up to 22 cartridges along with 15 cartridge tips.



Compatible with: Systainer³ M 337 + M 437

EPP Spray Can Inserts

It provides a capacity for carrying up to 14 spray cans.



Compatible with: Systainer³ M 337 + M 437



SYSTAINER SYSTEMS

3. Branding

Choosing the right individualized type of Systainer³, and structure is crucial to ensuring that your industrial equipment is properly stored, transported, and protected. Yet, to best customize your Systainer³, and truly make it an emblematically organic, signature branding and integral part of your business and industry, systainer[®] offers customized printing and labeling to present your logo on the Systainer³, as well as change the product's color to match and extend upon that of your business.

Printing & Labeling

Branding and marketing have never before been so organically integrated with available options. You have the option to label your Systainer³, with your custom-colored logo that can be displayed in several areas, including the T-Loc itself.



Coloring

Choosing your company's logo or slogan allows for a distinctive display, and choosing a color to match your business allows for further enhancement. While you may prefer standard light grey with signal blue or all anthracite, there is no reason to settle simply. The endless custom color options available take the Systainer³ individualization to the next level, as we can create a case in any color your industrial brand requires. systainer[®] offers a vast array of colors for you to choose from that will augment your product's uniqueness with unparalleled exclusivity within your industry.



COLOR

	Standard colors	Additional colors
Body with lid	3)	1) 4) 5) 6) 7) 8) 9) 10)
Lid handle	3)	1) 4) 5) 6) 7) 8) 9) 10) 12)
Catch	3)	1) 4) 5) 6) 7) 8) 9) 10) 12)

1) RAL 7035, light grey 4) RAL 9004, black 7) RAL 3002, carmine red 10) RAL 6001, emerald green
 2) HKS 43 K, signal blue 5) RAL 1007, daffodil yellow 8) RAL 5015, sky blue 11) HKS 54 K, signal green
 3) RAL 7016, anthracite 6) RAL 2011, deep orange 9) RAL 5003, sapphire blue 12) RAL 9016, white

Get Started Today!